



SYSTEMTECHNIK
FÜR BETRIEBSMITTEL

solutions®
equipment



BE SMART

CONTENTS

Introducing STB	p. 3
SmartStockSolutions	p. 8
Shelving systems with drawers	p. 12
Options	p. 18
Spiral Systems	p. 20
Cabinet systems	p. 21
Drum vending machines	p. 22
Large paternosters	p. 24
Systems with access control	p. 25
Weighing technology	p. 26
Client examples	p. 27



SmartStockSolutions by STB

The article dispensing systems by STB are your first choice for fully managed, digitally controlled material flows and highly effective workflows.

Our systems are already successfully in use in many industrial fields. This is most often the case in settings where resourceefficient and controlled dispensing and management are to be achieved.

The most diverse and individually tailored systems are available to meet all of your requirements. We also develop prototypes and bespoke software applications for you. Our inhouse hardware and software experts are at your side with their expertise.

With our help, you too can realize material, tool and time savings of up to 25 %.

We look forward to meeting you!



STB – Systemtechnik für Betriebsmittel GmbH

As far back as 15 years ago, a lack of traceability and the resulting lack of transparency regarding article stocks and storage locations incited us to develop management hardware and software solutions. Because only a professional article stock management can reduce costs and storage-periods and offer planning reliability.

STB systems are used to efficiently manage and retrieve operating material, personal protective equipment, tools and electronic components. As such, our wideranging portfolio maps standard solutions as well as highly individual applications for justintime operating material management.

Our products are designed for local and permanent availability, shortened distances and uninterrupted production around the clock. In addition, access to stock and evaluation data enables a detailed analysis of all article data. Nonmoving articles are also analyzed, and dead capital is reduced to a minimum.

Our systems create cost transparency and help you identify rationalization potentials. Because: Reduced excess stock and throughput times increase productivity.

The quality of our dispensing systems and application software is characterized by durability, operational availability and permanent further development. Including integration into ERP systems, measuring equipment management and consumption and cost analyses.

Operating material is provided on site and just in time for production.

Together, we project your tool, resource and article dispensing, and permanently and professionally support you on your way to achieving more transparency, realizing your saving potentials and optimizing productivity.





New training and presentation rooms

In addition to stateofheart workshop and production areas, our extension building, which was completed in 2019 and measures 700 m2, now also houses a generously dimensioned training room with highquality presentation equipment.





SMARTWARE



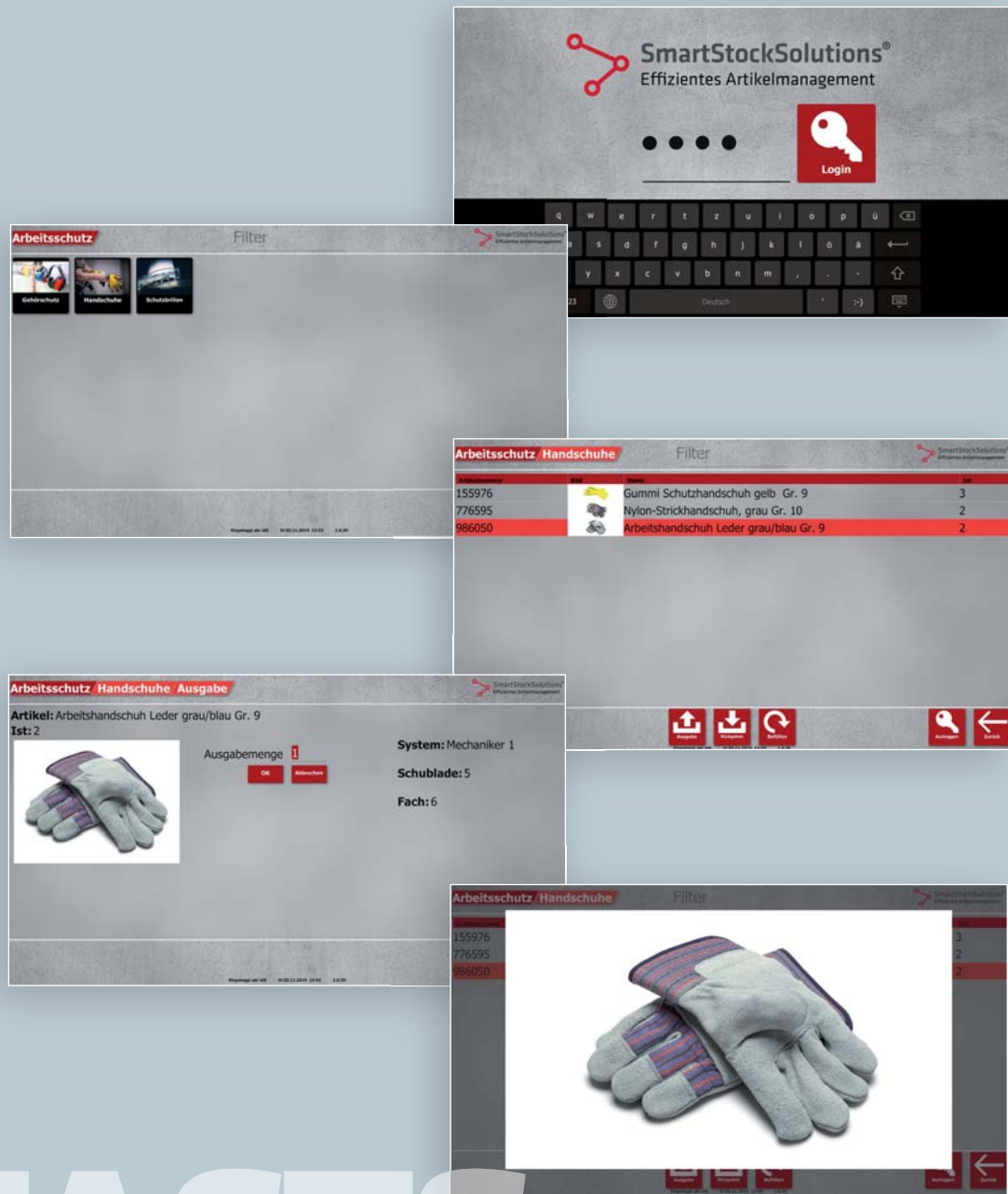
SmartStockSolutions® Effizientes Artikelmanagement

The software...

Our automatic management and storage systems are based on a continuously improved, advanced allinone software solution. The user interface, which is extremely intuitive and easy to understand, features convenient search and help functions.

The fanless industrial PCs are controlled via touch screen, both the configuration and the evaluation are done conveniently from your workplace. Our software covers the entire storage management, evaluation, and automatic post material planning. This allows you to prevent downtimes and always order and load in time.

Your current materials management systems, ERP systems and/or superordinate tool management systems can be integrated perfectly via interfaces.



FACTS

- ❖ Timesaving retrieval during running operation thanks to userfriendly interface
- ❖ Transparency for you and your suppliers
- ❖ Supplierindependent – you control access to all information
- ❖ Evaluation options, controlling, consumption data
- ❖ SQLite or SQL databases
- ❖ JPEGs and PDFs for displaying drawings, images, etc.
- ❖ Measuring equipment management
- ❖ Client server solutions



Extended workshop and production

The spatial capacities of recent years repeatedly reached their limits. Workshop and production areas had to be enlarged by approx. 50 % to meet current and future requirements.

In this context, ergonomics and economics were reconsidered to create new spaces that meet demand and that are ideally suited for individual priorities of work.





WS 8/600

Dimensions

Width:	820 mm
Height:	1.000 mm + Display
Depth:	711 mm

Storage capacity

Drawers: 8
Load capacity per drawer: 200 kg

The number and height of drawers and the number of positions are variable.

System details

- Individually lockable drawers and compartments (optional)
- Visual display of storage location
- Variable compartment partitioning
- Indicator light for released drawers
- integrated base for lift truck forks

Variants

The number of drawers and drawer heights are configurable; flaps can be configured.





WS 11/600-F

Dimensions

Width:	820 mm
Height:	1.500 mm
Depth:	711 mm
Drawers:	12
Capacity per drawer:	200 kg



WS 12/600

Dimensions

Width:	820 mm
Height:	2.000 mm
Depth:	711 mm
Drawers:	12
Capacity per drawer:	200 kg



WS 12/1000-F

Dimensions

Width:	1.294 mm
Height:	1.500 mm
Depth:	711 mm
Drawers:	12
Capacity per drawer:	200 kg



WS 12/1000

Dimensions

Width:	1.294 mm
Height:	2.000 mm
Depth:	711 mm
Drawers:	12
Capacity per drawer:	200 kg



WS 30/300-F

Dimensions

Width:	918 mm
Height:	1.500 mm
Depth:	711 mm
Drawers:	30
Capacity per drawer:	200 kg



WS 30/300

Dimensions

Width:	918 mm
Height:	2.000 mm
Depth:	711 mm
Drawers:	30
Capacity per drawer:	200 kg



WS 36/300

Dimensions

Width:	1.327 mm
Height:	2.000 mm
Depth:	11 mm
Drawers:	36
Capacity per drawer:	200 kg

Shelving systems with drawers



WS 30/300

Dimensions

Width:	1.327 mm
Height:	1.000 mm + Display
Depth:	711 mm

Storage capacity

Drawers:	30 Stück
Capacity per drawer:	200 kg

The number and height of drawers and the number of positions are variable.

System details

- Individually lockable drawers and compartments (optional)
- Visual display of storage location
- Variable compartment partitioning
- Indicator light for released drawers
- integrated base for lift truck forks
- 15,6" multitouch industrial PC





WS 30/150-F

Dimensions

Width:	612 mm
Height:	1.500 mm
Depth:	711 mm
Drawers:	30
Capacity per drawer:	200 kg



WS 60/150-F

Dimensions

Width:	1.124 mm
Height:	2.000 mm
Depth:	711 mm
Drawers:	60
Capacity per drawer:	200 kg



WS 45/300

Dimensions

Width:	1.320 mm
Height:	2.000 mm
Depth:	711 mm
Drawers:	45
Capacity per drawer:	200 kg

Shelving systems with drawers



WS 75/150

Dimensions

Width:	1.380 mm
Height:	2.000 mm
Depth:	711 mm

Storage capacity

Drawers:	75
	150mm wide
Capacity per drawer:	200 kg

The number and height of the drawers and the number of positions are variable

System details

- Individually lockable drawers and compartments (optional)
- Visual display of storage location
- Variable compartment partitioning
- Indicator light for released drawers
- integrated base for lift truck forks
- 15,6" multitouch industrial PC



Flap design

Standard sizes for 600 mm wide drawers

Standardized flap sizes ensure traceability and safe retrieval of individual articles. The flap system has a modular design, allowing individual drawers to be loaded.



40 St. a' 66,5 x 77mm (BxT)



32 St. a' 66,5 x 107mm (BxT)



24 St. a' 66,5 x 150mm (BxT)

Upgrade on a 21,5" multi-touch industrial PC

Factsheet

- INTEL Quad-Core
- 8 GB random access memory
- 256 GB SSD hard disk
- IP64 Front
- Windows 10 IoT

Even more userfriendly,
Full HD, resolution 1920 x 1080.



Access control: RFID, barcode, fingerprint

The RFID reader can be combined optimally with existing cards (e.g. for time registration) and transponders. Our fingerprint readers offer another convenient and safe solution for system authentication. The bar code reader is available in 1D and 2D variants. In addition to the simple article search, the devices can also be used for additional bookings and for authentication.



RFID



bar code



fingerprint

Drawer systems

for different sizes, quantities, contents

All drawer systems can be configured based on an appropriate grid dimension and with different drawer heights. Drawer heights from 75 mm to 300 mm are available.





Helix 70

Dimensions

Width: 1.000 mm
Height: 1.800 mm
Depth: 865 mm

Storage capacity

Spiral compartments: 70 units with up to 30 packaging units per space

Fully controlled dispensing of operating material with high turnover rates, e.g.

- indexable inserts
- drill bits
- end mill cutters
- printer cartridges
- cparts

System details

- lift system
- lvariable number, height and number of spaces
- lintegrated base for lift truck forks
- l15,6" multitouch industrial PC





Locker

Dimensions

Size/number: variable

Subject format:

Width: 355mm

Height: 380 mm

Depth: 600 mm

Number of compartments, heights and configurable widths. Perfect for electrical devices Advantage: traceability of individual tools. With or without glass pane.



VAS 2/120

Dimensions

Width: 820 mm

Height: 1.348 mm

Depth: 710 mm

Comp. format: e. G. SK40, HSK

Configurable compartment number, heights and widths. Different tool inserts available.



VAS 5/500

Dimensions

Width: 1.040 mm

Height: 2.140 mm

Depth: 1.050 mm

Compartments: 480

Fachformat: z. B. SK40, HSK

Configurable compartment number, heights and widths. Also for bulk goods, broaches and more. Different tool inserts available.

Rondell

Dimensions

Width:	1.200 mm
Hight:	2.000 mm
Depth:	1.200 mm

Capacity

4 compartment sizes

- 1: 38 x 50 x 205 mm
- 2: 38 x 100 x 205 mm
- 3: 122 x 50 x 205 mm
- 4: 122 x 100 x 205 mm

Please note that the compartments trapezoidal in depth rejuvenate.

*Fully controlled edition
for equipment with high
turnover rate such as...*

- indexable inserts
- drill
- end mill
- print cartridges

System details

- lift system
- Number, hight are variable
- integrated base for lift truck forks
- 15,6" multitouch industrial PC





KPN 14/252

Abmessungen

Width:	1.760 mm
Height:	2.250 mm
Depth:	955 mm
Load cap./comp.:	10 kg

Compartment sizes

Width:	155 - 1.400 mm
Height:	125 bzw. 250 mm
Depth:	300 mm

Storage capacity

252 single compartments with automatic retrieval opening

Variants

Storage of different articles with allocated space per single compartment. More than 1000 spaces can be created.



Large paternoster

Dimensions

Height:	as of 2.250 mm
Width:	variable
Depth:	variable

Variants

Flap design and heavy load types.



Lift system

Dimensions

Height:	as of 2.250 mm
Width:	variable
Depth:	variable

Variants

Different tray configurations, flap design, heavy load types, ergonomic solutions.

Any third party device can be operated conveniently and costefficiently using our software solutions!



GB 90

Dimensions

Height:	ab 2.000 mm
Width:	variable
Depth:	variable

Variants

Flexible solution for bulky items.
Access control through electronically controlled door lock.





FTS 50

Multisystem double door cabinet with up to 42 weighing units. The withdrawal quantity is posted automatically. Precise assignment of material to operator. Economical management of small quantities.

Dimensions

Width:	1.200 mm
Height:	1.950 mm (plus monitor)
Depth:	540 mm











SYSTEMTECHNIK
FÜR **B**ETRIEBSMITTEL

34576 Homberg(Efze) · Zorngrabenstraße 7
Tel. +49 (0)5681 9314760 · Fax +49 (0)5681 9314766
info@stb-system.de

www.stb-system.de